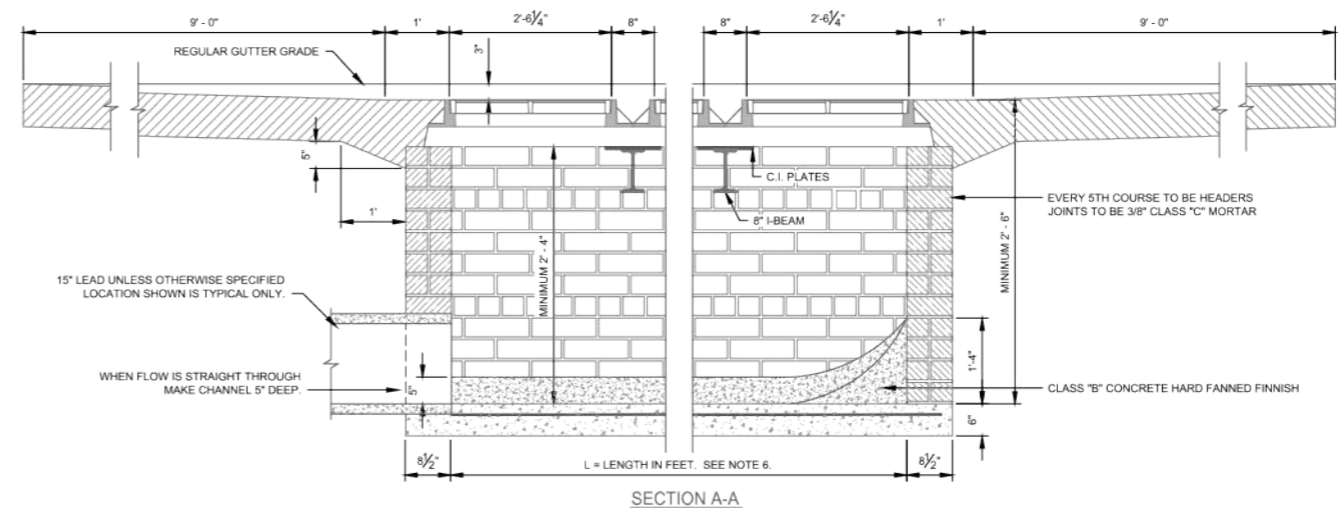
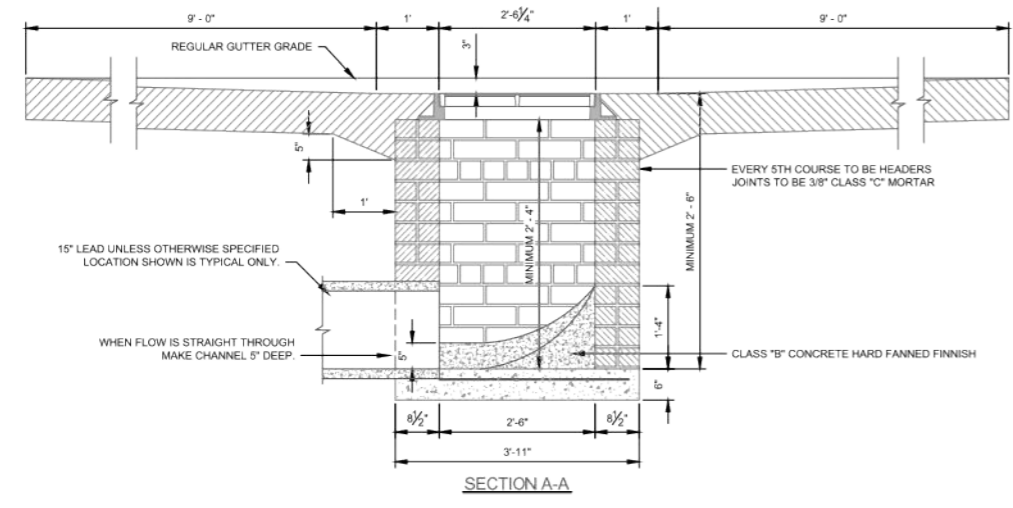
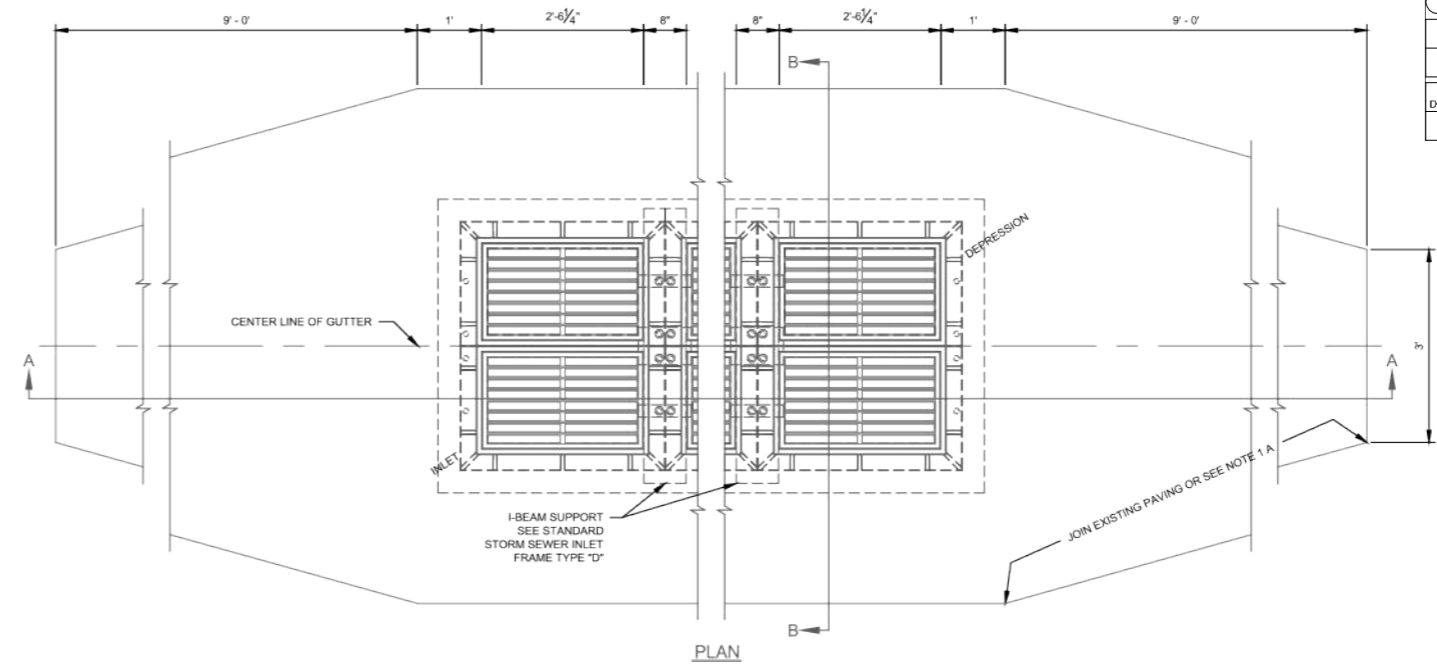
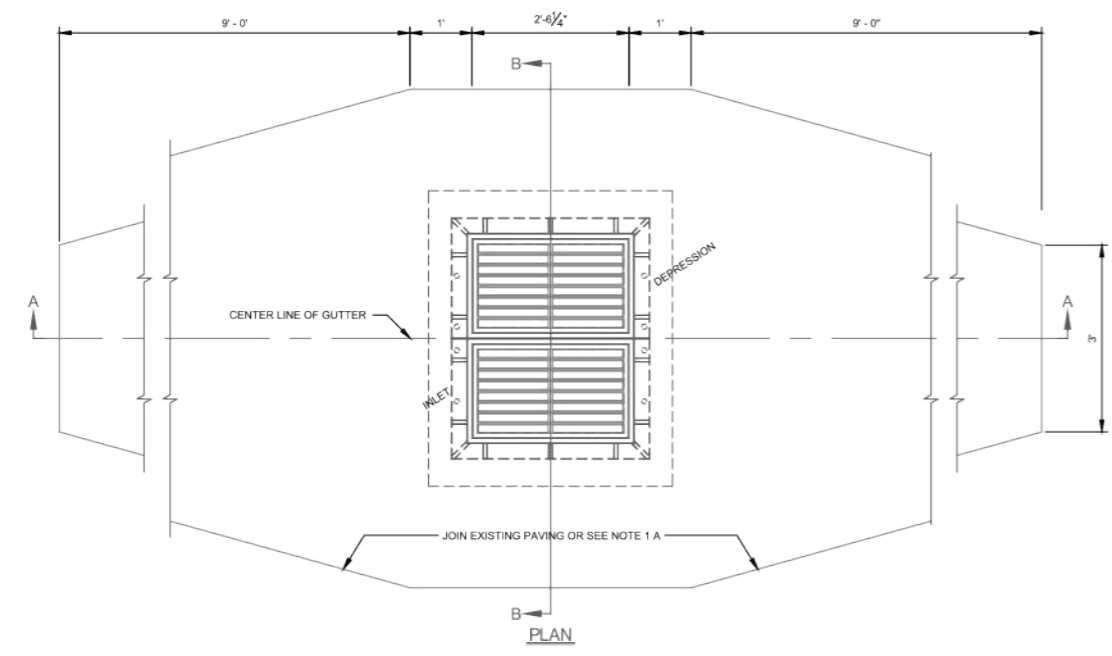
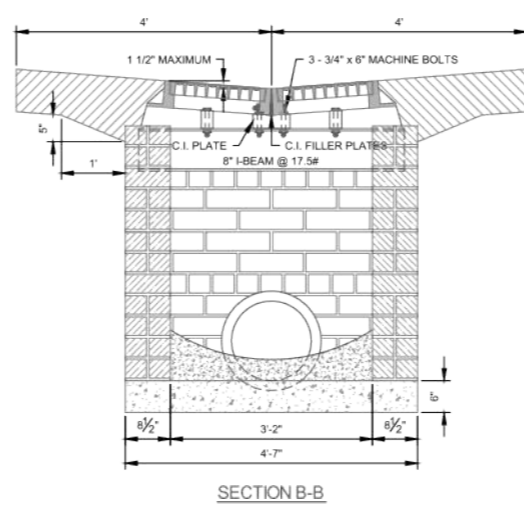
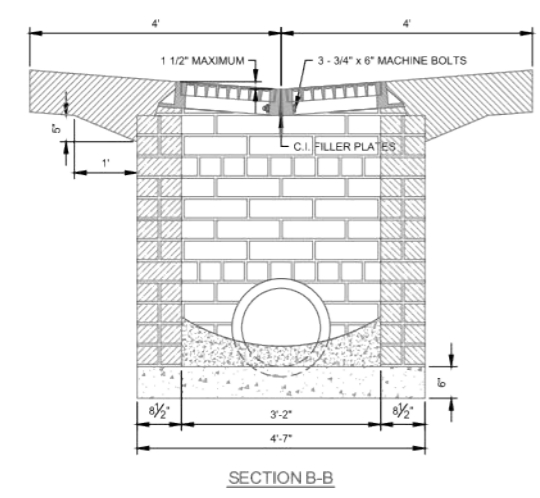


OKLAHOMA DEPARTMENT OF TRANSPORTATION					
FED. ROAD DIST. NO.	STATE	STATE JOB NO.	FISCAL YEAR	SHEET NO.	TOTAL SHEETS
4	OKLA	17020(07)		37	
DESCRIPTION			REVISIONS	DATE	



**STORM SEWER INLET**  
DESIGN #6 (DOUBLE GRATINGS)

**STORM SEWER INLET**  
DESIGN #7 (MULTIPLE GRATINGS)



- GENERAL NOTES:
1. A. WHEN INLET IS BUILT IN NEW PAVEMENT, THE PAVEMENT SHALL BE MONOLITHIC WITH NEW PAVEMENT AND CONFORM TO PLANS AND SPECIFICATIONS THEREOF.
  - B. WHEN INLET IS BUILT IN EXISTING PAVEMENT THE TYPES OF INLET PAVEMENT SHALL CONFORM TO THAT OF THE ADJACENT SLAB UNLESS OTHERWISE PROVIDED IN SPECIAL PROVISIONS.
  2. CAST IRON STEPS SHALL BE PLACED IN ALL INLETS 3' OR MORE IN DEPTH IN CONFORMITY WITH STANDARD SPECIFICATIONS.
  3. THE GRATING TO BE USED IN THIS STRUCTURE WILL BE SHOWN ON THE PLANS OR DESIGNATED IN SPECIAL PROVISIONS.
  4. THIS STRUCTURE WILL BE DESIGNATED ON PLANS AS INLET NUMBER 6.
  5. BASIS OF PAYMENT FOR INLETS WILL BE FOR A LUMP SUM INCLUDING REMOVAL AND REPLACEMENT OF EXISTING PAVEMENT.

- GENERAL NOTES:
1. A. WHEN INLET IS BUILT IN NEW PAVEMENT, THE PAVEMENT SHALL BE MONOLITHIC WITH NEW PAVEMENT AND CONFORM TO PLANS AND SPECIFICATIONS THEREOF.
  - B. WHEN INLET IS BUILT IN EXISTING PAVEMENT THE TYPES OF INLET PAVEMENT SHALL CONFORM TO THAT OF THE ADJACENT SLAB UNLESS OTHERWISE PROVIDED IN SPECIAL PROVISIONS.
  2. CAST IRON STEPS SHALL BE PLACED IN ALL INLETS 3' OR MORE IN DEPTH IN CONFORMITY WITH STANDARD SPECIFICATIONS.
  3. THE GRATING TO BE USED IN THIS STRUCTURE WILL BE SHOWN ON THE PLANS OR DESIGNATED IN SPECIAL PROVISIONS.
  4. THIS STRUCTURE WILL BE DESIGNATED ON PLANS AS INLET NUMBER 7-X (IN WHICH X = NUMBER OF DOUBLE GRATING).
  5. BASIS OF PAYMENT FOR INLETS WILL BE FOR A LUMP SUM INCLUDING REMOVAL AND REPLACEMENT OF EXISTING PAVEMENT.
  6. L = (3.18 N) - 0.66 IN WHICH N = THE NUMBER OF DOUBLE GRATINGS.

DESIGN	X	OKLAHOMA DEPARTMENT OF TRANSPORTATION	
DRAWN	CWT	<b>SPECIAL INLET DETAIL</b>	
CHECKED	JDH		
APPROVED	JDH		
SQUAD	Tt		
		STATE JOB NO. 17020(07)	SHEET NO. 37
		CITY PROJECT R-1311B GARFIELD COUNTY	

5/1/2017 3:20:34 PM - P:\2772-2131-2772-3001\CAD\SETFILES\CLEVELAND BLVD PLANS\DETAILS.DWG - SCHUMACHER, MIKE